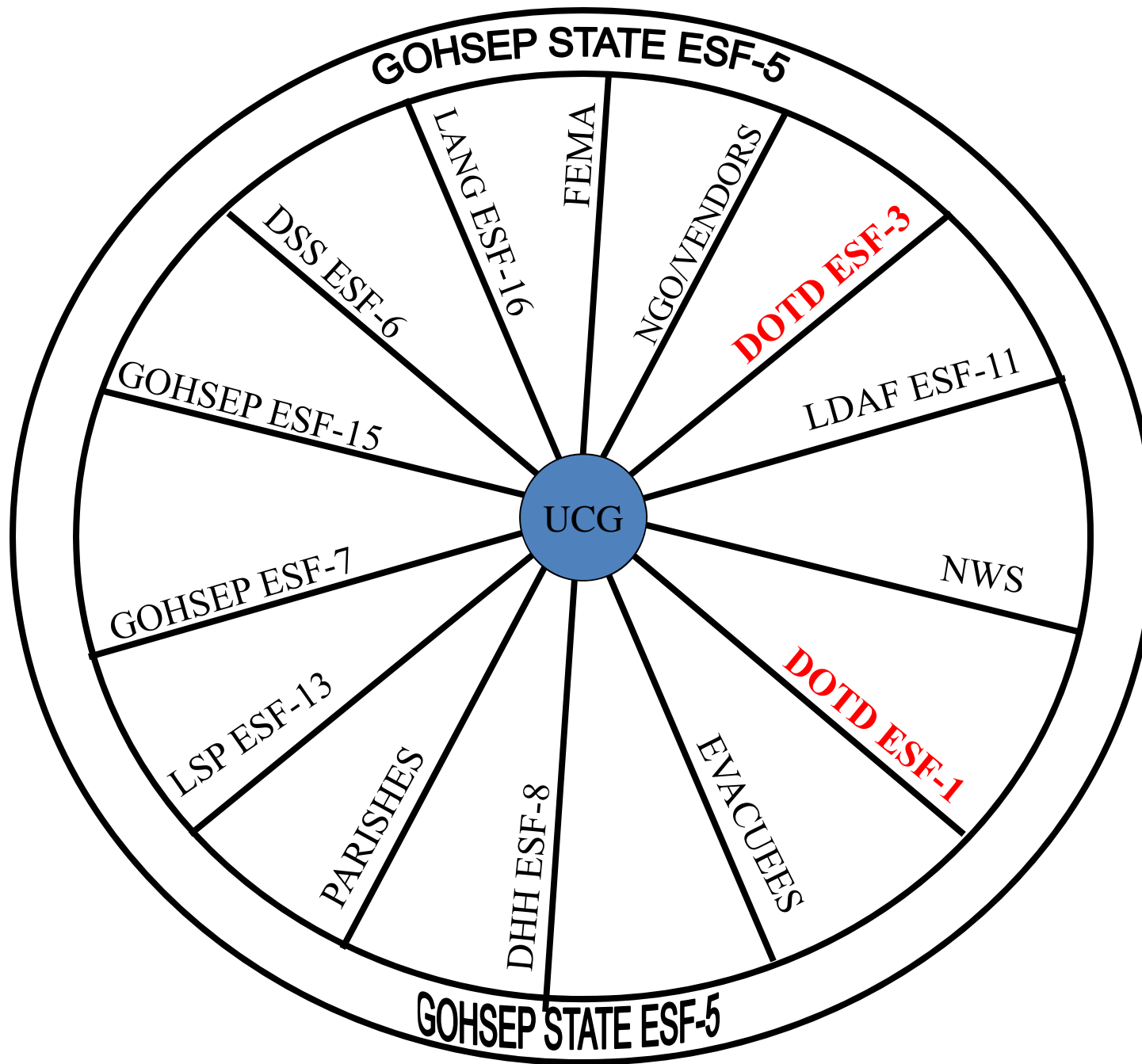


DOTD

Readiness and Response

Briefing for
SASHTO 2014



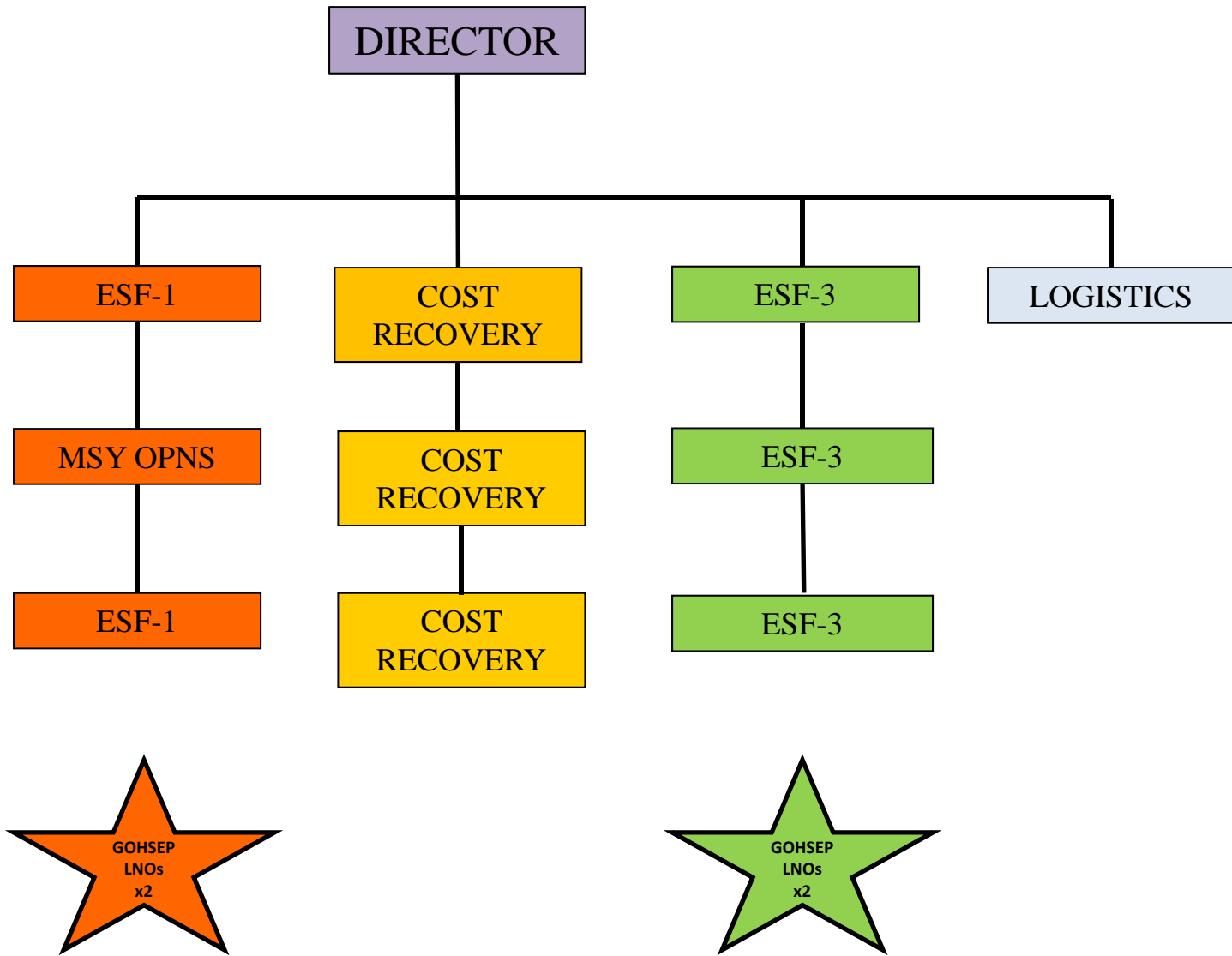


- ESF-1 Transportation**
- ESF-2 Commo
- ESF-3 Public Works, Engring, Contra flow**
- ESF-4 Firefighting
- ESF-5 GOHSEP
- ESF-6 Mass Care and Sheltering
- ESF-7 Resources spt
- ESF-8 Medical
- ESF-9 SAR
- ESF-10 HAZMAT
- ESF-11 Pets/Fuel
- ESF-12 Energy/utility
- ESF-13 Public Safety
- ESF-14 Recovery/mit.
- ESF-15 Public Information
- ESF-16 Mil Support
- NWS-Weather
- Parishes
- FEMA
- Evacuees
- NGOs/Vendors

RESPONSIBILITIES

- **ESF-1 TRANSPORTATION**
- **ESF-3**
 - ALL HAZARDS
 - DAMAGE ASSESSMENT
 - DEBRIS MANAGEMENT
- **LEVEES**
 - SHARED RESPONSIBILITY WITH OCPRA ON DAILY BASIS
 - OCPRA HAS “LEAD” FOR POST DISASTER
- **CONTRAFLOW – LSP HAS “LEAD”, WITH DOTD INPUT**

EMERGENCY OPERATIONS



CENTRALIZED PLANNING; DECENTRALIZED EXECUTION

- **Districts operate Vehicle Staging Areas (VSAs)**
- **Districts manage storm response**
- **Districts manage/operate debris operations**
- **Districts conduct all hazards response**

RESPONSE MECHANISM

TWO PARTS

- **A - HQ LEVEL:**
 - TRAFFIC MANAGEMENT CENTER (TMC) INTELLIGENT TRANSPORTATION SYSTEM (ITS)
 - ESF-1 BRANCH
 - ESF-3 BRANCH
 - LNO's AT SEOC
 - CALL CENTER
 - COST RECOVERY
- **B – 9 DISTRICTS**

BASIC HURRICANE RESPONSE OPTEMPO

- MONITORING OF STORM**
- PREPARATORY ACTIONS BY ALL**
- ADHERING TO DECISION POINTS**
- EVACUATIONS UNDERWAY BY ARRIVAL
OF TF WINDS AT THE DECISION ARC**

BASIC HURRICANE RESPONSE

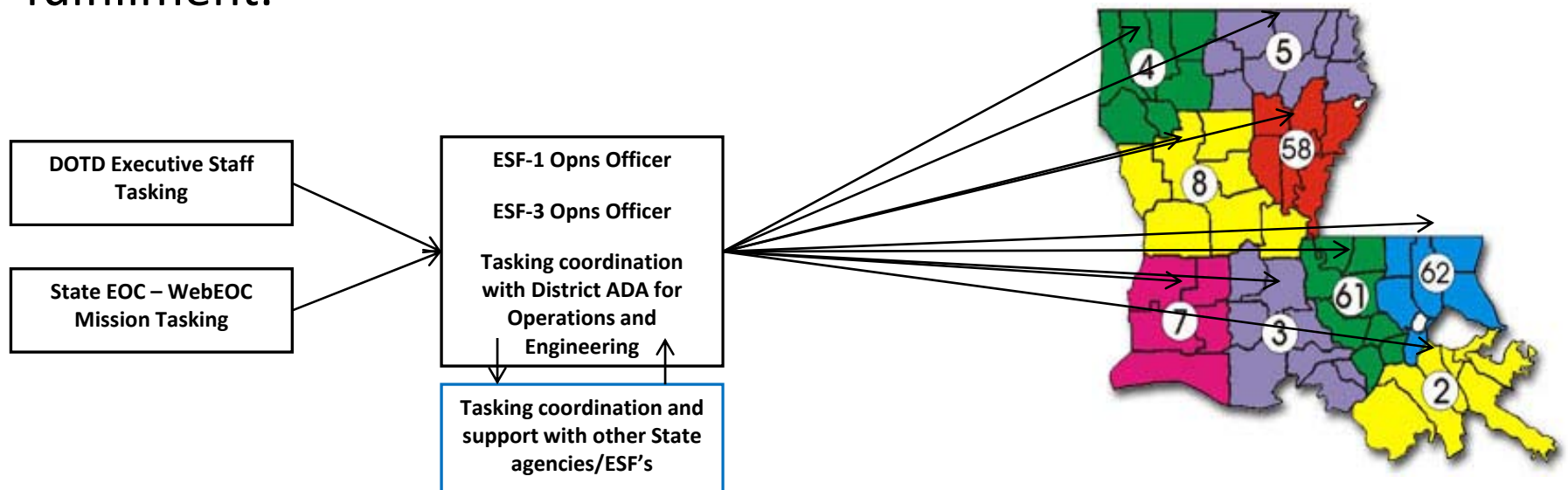
- **MOBILIZATION AND STAGING**
- **REPORTING S/A TO EXECUTIVE STAFF**
- **ASSISTED EVACUATIONS**
- **MSY EVACUATION**
- **CONTRAFLOW**
- **INITIAL ROUTE CLEARANCE**
- **DEBRIS MANAGEMENT**
- **DAMAGE ASSESSMENTS**
- **RE-ENTRY**
- **COST RECOVERY**

MISSION AND RESPONSIBILITIES

Mission Tasking....

1. *DOTD Executive Level tasking*
2. *State EOC tasking via WebEOC*

* Coordinate with respective District ADA for mission task fulfillment.



DOTD EOC

ESF-1

- ESF-1 Lead
- Staff
- Cost Recovery representative

ESF-3

- ESF-3 Lead
- Staff
- Cost Recovery representative

LOGISTICAL SUPPORT –

FUTURE PLANS TEAM

PLANNING/STAFFING TEAM			
POSITION	DAY SHIFT	NIGHT SHIFT	ALTERNATE
Lead		(PROJECT MNGT DIRECTOR)	
Team Member	(UNDERSECRETARY)		
Team Member		(ATTORNEY-GENERAL COUNSEL 3)	
Team Member	(ATTORNEY 3)		(ATTORNEY SUPERVISOR)
Team Member	(HIGHWAY SAFETY ADMINISTRATOR)		(BRIDGE DESIGN ENGINEER ADMIN)
Chief Construction Engineer	(CHIEF CONST DIV ENGINEER)		
Public Works & Water Res Engineer, and Levee systems	(DEP ASSISTANT SECRETARY, OPW)		
GIS Administration	(IT GEO MANAGER)		
ESF-1	Senior on duty provides input		
ESF-3	Senior on duty provides input		
Emergency Operations Director	(DIR EMER SERVICES)		
Dams (on call)	(DIR - DAMS, LEVEES & RES DEV)		(DOTD PROGRAM MANAGER)
1. Team develops plans for future missions and requirements. 2. Team also listens in on daily GOHSEP teleconference calls			

DOTD EOC

COST RECOVERY

- Cost Recovery Lead
- Linked to each Cost Recovery representative in EOC

DOTD EMERGENCY PROGRAMS

- **DSNAP COORDINATOR/HQ ESF-1 COORDINATOR**
- **CONTRAFLOW COORDINATOR**
- **TRAFFIC MANAGEMENT**
- **SHELTER SUPPORT**
- **DAMAGE ASSESSMENT TEAMS/DIRs**
- **INFORMATION CELL & EMERGENCY CALL CENTER**
- **PUBLIC INFORMATION**
- **CONTINUITY OF OPERATION PLAN (COOP)**

LADOTD
ESF-3 PW & Engineering

SASHTO 2014



Emergency Support Function - 3

Public Works & Engineering

- State ESF's
- Mission and Responsibilities
- Operational Organization
- Best Practices
- Questions

STATE EMERGENCY SUPPORT FUNCTIONS OR ESF'S

ESF1 Transportation

ESF 2 Communications

ESF 3 Public Works and Engineering

ESF 4 Firefighting

ESF 5 Emergency Management

ESF 6 Mass Care, Emergency Assistance, Housing and Human Services

ESF 7 Resources Support

ESF 8 Public Health & Medical Services

ESF 9 Search & Rescue

ESF 10 Oil Spill, Hazardous Materials and Radiological

ESF 11 Agriculture

ESF 12 Energy and Utilities

ESF 13 Public Safety and Security

ESF 14 Community Recovery, Mitigation and Economic Stabilization

ESF 15 Emergency Public Information

ESF 16 Military Support to Civil Authorities

MISSION AND RESPONSIBILITIES

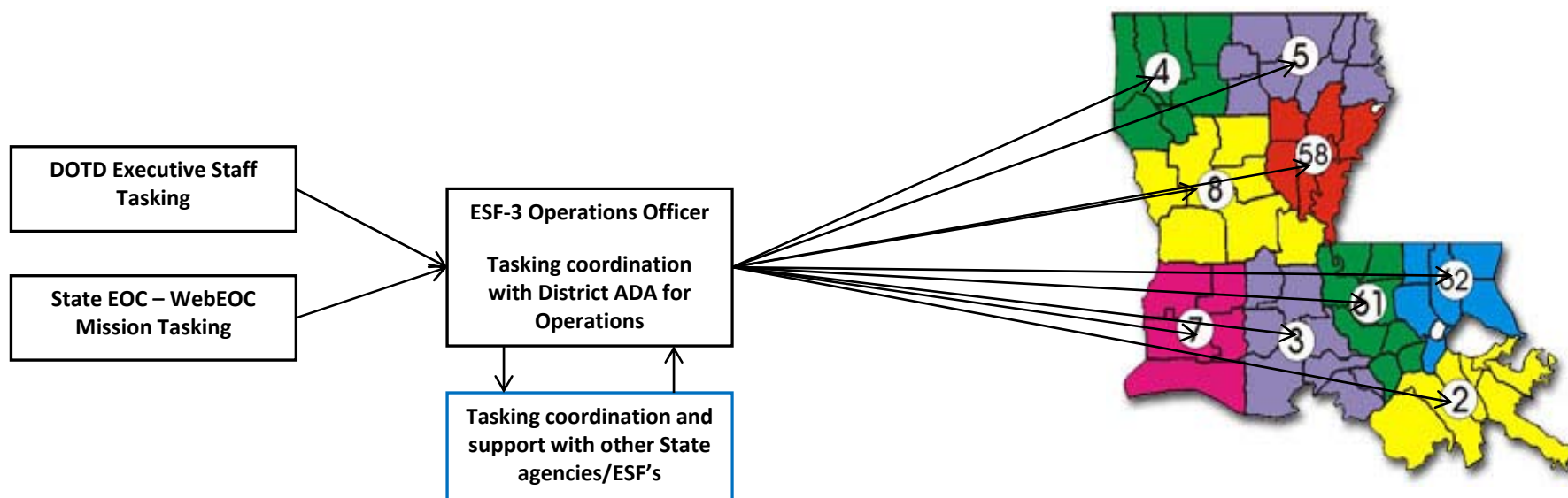
- **ESF-3 Lead, Emergency Operations Center (EOC) Operations (typically 12 Hr. Op periods) in sync with the State Emergency Operations Center (SEOC)**
- **Public Works & Engineering Resource Coordination. In concert and collaboration with SEOC, State Agency's and local parishes. Lead and Support roles.**
- **Contraflow implementation coordination (LSP/DOTD TMC) (Contraflow conference April – LADOTD, MDOT, LSP, MSP, FSP)**
- **Disaster Assessment Team deployment (oversight)**
- **DOTD Debris Manager – (Operational oversight – Delegation of authority/responsibility to District Debris Managers (Districts 02, 03, 07, 61 & 62) FEMA PA and FHWA ER program compliance.**

MISSION AND RESPONSIBILITIES cont...

Mission Tasking....

1. DOTD Executive Level tasking
2. State EOC tasking via WebEOC

* Coordinate with respective District Operations for mission task fulfillment.



Communications

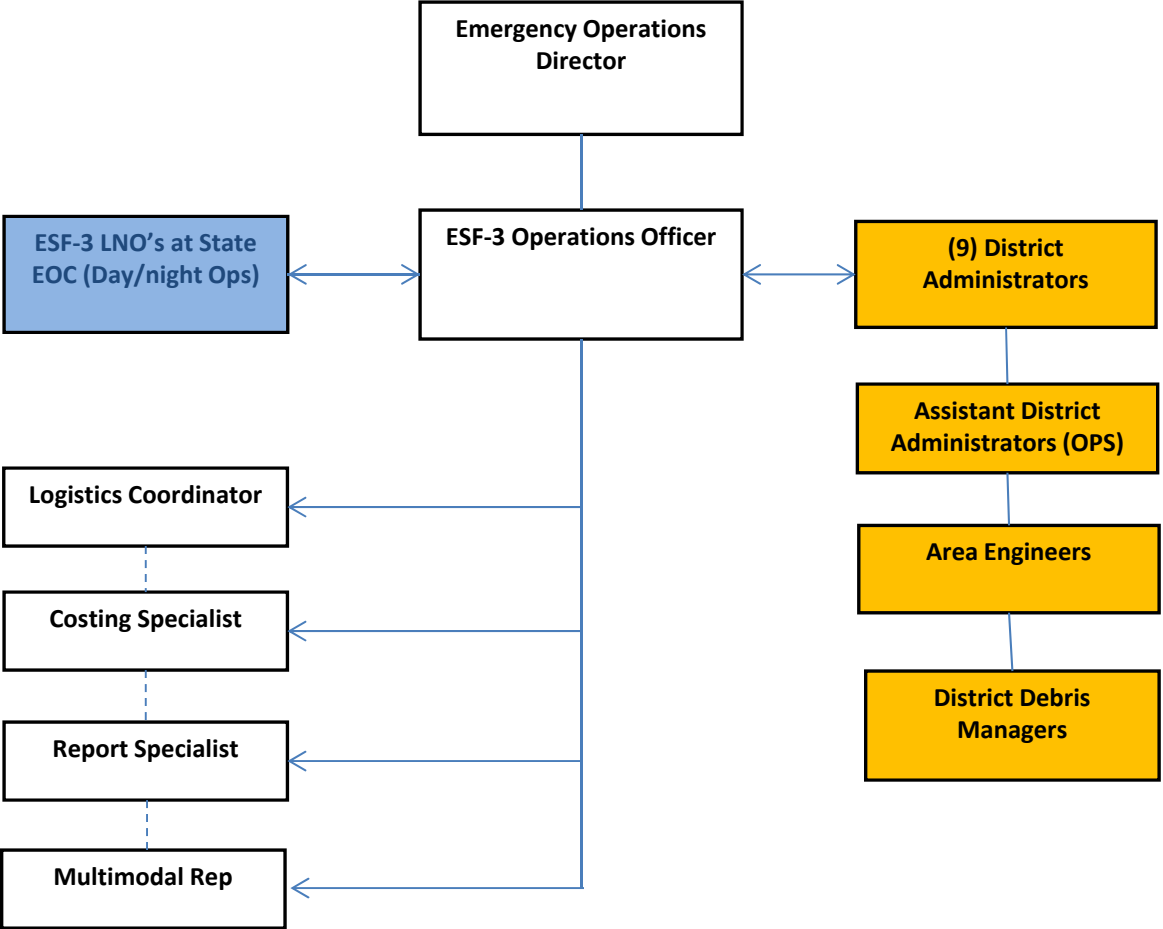
Communications: *”If you can’t communicate, you can’t coordinate”*

Primary Communications: Landline/Cell phones/Email/Text

Secondary Communications: Base station, Portable radios

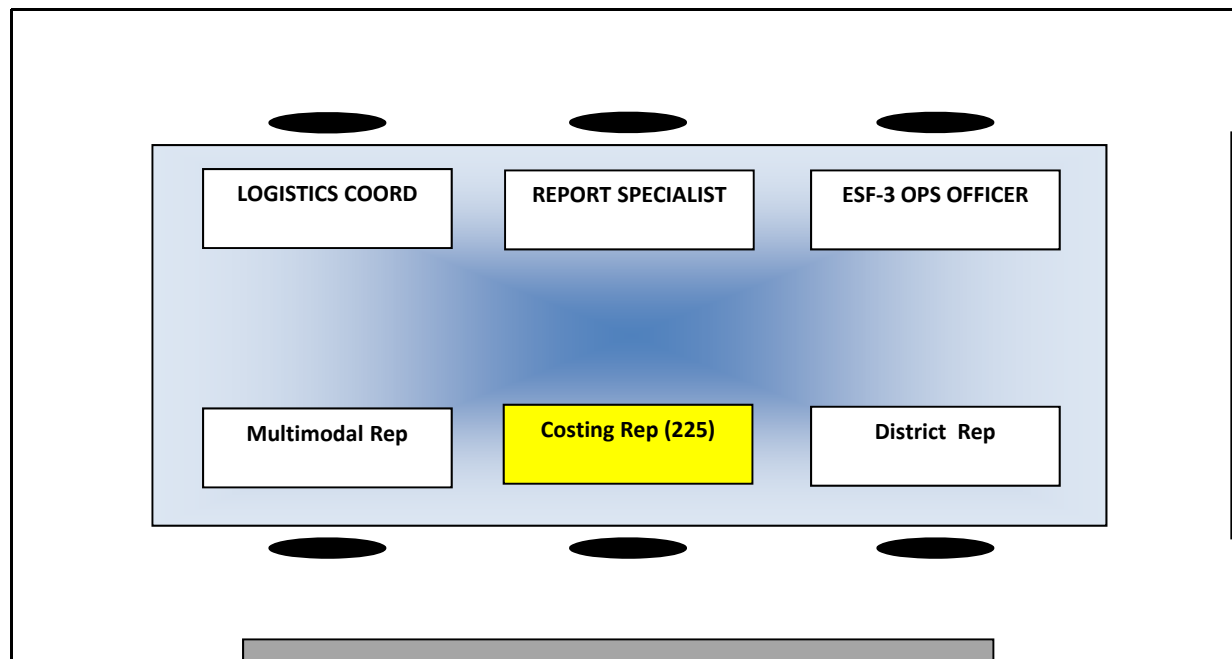
*Dedicated 700Mhz ESF-3 Channel is BR Special Operations
2(BRSOPS2)

OPERATIONAL ORGANIZATION



OPERATIONAL ORGANIZATION

EFS-3 EMERGENCY OPERATIONS CENTER (EOC)



***Note: During Flooding Events, a request for CPRA representation augmentation in support of Southern District Levee issues.**

“Best Practices”

- ❖ The use of collapsing non-affected DOTD District resources to majorly impacted DOTD Districts during emergencies.**
- ❖ Use of Emergency contracts to supplement in-house DOTD resources.**
- ❖ Strategic planning for tactical application of limited resources. (Example: six Winter weather events, focus on “Priority routes”. 7 million lbs of salt expended.**
- ❖ Effective use of PIO’s when responding to events. Public Situational Awareness supports DOTD mission objectives. (Winter weather, PSA’s advising public to remain off the roads).**

“Best Practices” cont...

- ❖ DOTD District providing augmentation to local Parish EOC’s during emergency/disaster environments. (Force multiplier for Parish, DOTD District and HQ’s).**
- ❖ Embedding costing personnel into EOC staffing. Capture costs as they occur, in support of recovery reimbursement.**
- ❖ The use of internal DOTD “Intranet” standardized Situational Reports (SITREP’s) templates that are fully accessible to all nine DOTD District Operational personnel.**

“Best Practices” cont...

- ❖ Development of the Senior Planning Team. Teams focuses on medium – long term objectives.**
- ❖ Emergency Staffing Guidance.**
- ❖ Annual Damage Assessment Team Training**
- ❖ Annual LA/MS Contraflow conference**
- ❖ Annual Debris Management conference**

Questions?



LOUISIANA DEPARTMENT OF
TRANSPORTATION & DEVELOPMENT